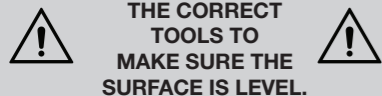
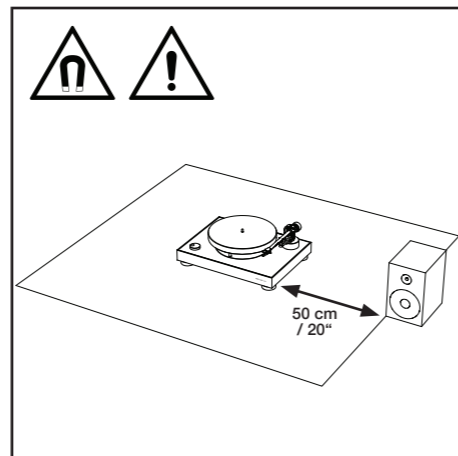


6. PREPARING THE SURFACE / SPACE



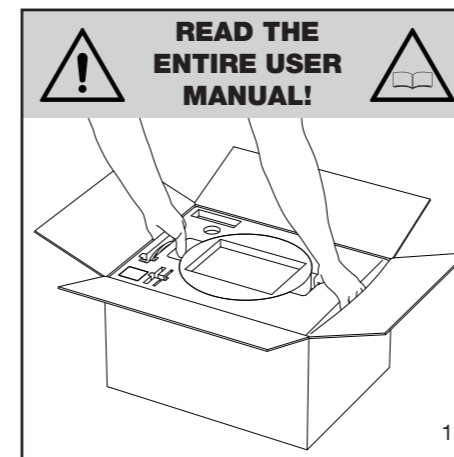
1. Make sure you set up the surface you wish to put the apparatus on is level and make sure the surface is flat.
2. The product should always be placed on a surface with enough area to fit the product feet fully on the surface.
3. Make sure the table, cabinet or surface has no metal parts that interact with magnets. Be certain to check on, next to and under the surface to make sure there are no metal parts in the vicinity that would cause interference with the turntable. (we suggest wooden surfaces)
4. Any metal or magnetic parts should be at least 50cm or 20" away from the turntable.
5. Make sure the speakers, preamps, amplifiers and other electronic equipment is positioned at least 50cm or 20" away from the turntable.
6. To avoid effects of vibrations and acoustic pressure, do not mount the product next to such items as speakers.
7. The product may pick up radio static if placed next to a radio. Therefore, try to keep the product away from radios.
8. If the product is near equipment (cell phone, etc.) that emits strong radio waves, noise may occur.



7. UNPACKING

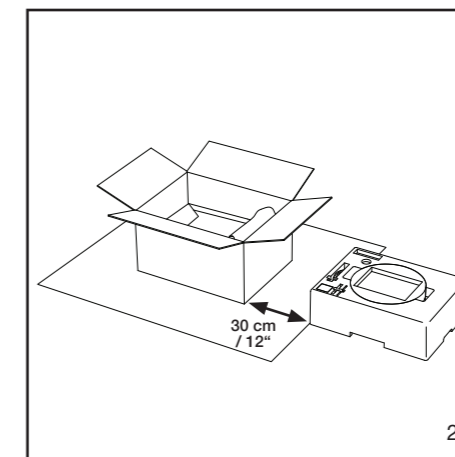
Read the entire user manual before unpacking the apparatus.

Always follow instructions when unpacking the apparatus.



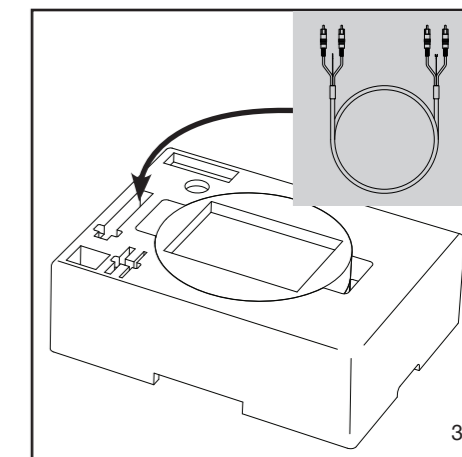
Remove the top half of the Styrofoam box. Grip on the sides with both hands and lift vertically out of the cardboard box. Place it on a solid and flat surface.

Make sure you set up the surface you wish to put the apparatus on in a level position and make sure the surface is flat before unpacking.



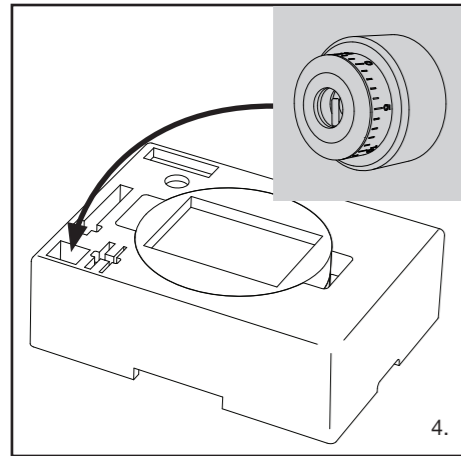
Place it at least 30 cm from the package.

The product should always be placed on a surface with enough area to fit the product feet fully on the surface. Optimum recommendation (width x depth): 480 mm x 450 mm / 19" x 17,7".

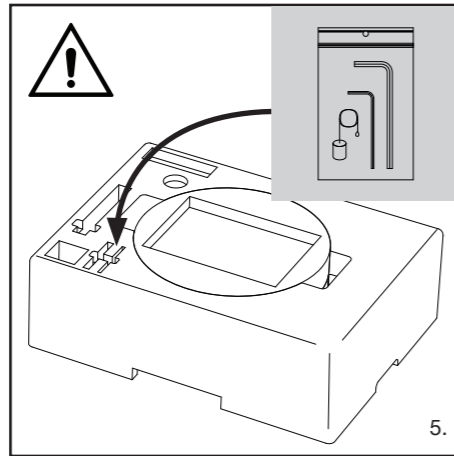


Take out the RCA cables and remove the ties.

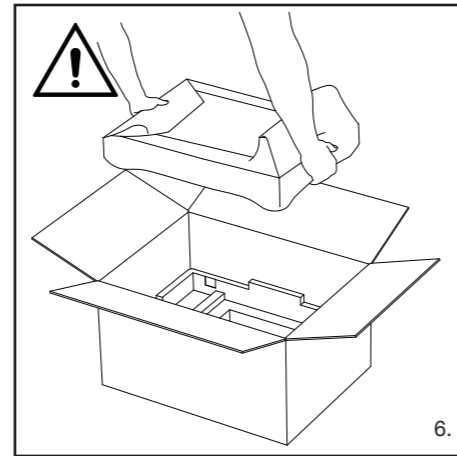
**REMOVE THE PROTECTIVE
FOAM SHEET/BAG.**



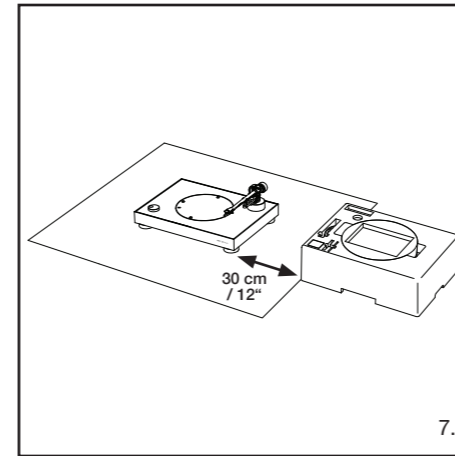
Take out the box with the tonearm weight.



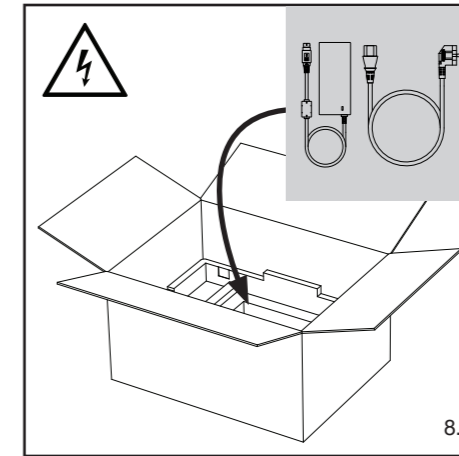
Take out the small bag with tools and anti-skating weight.



Take out the body of the turntable with both hands and place it at least 30cm (1 foot) away from the platter (top part of the Styrofoam box).

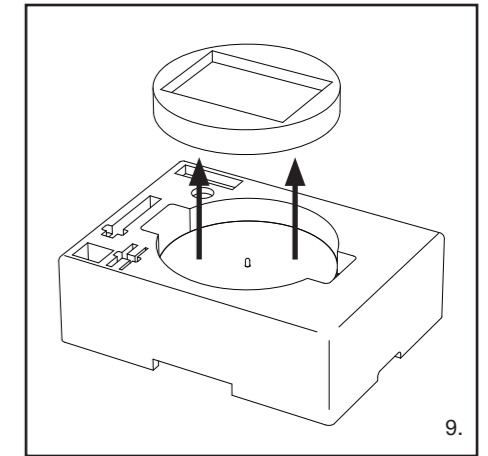


Place it at least 30 cm from the package.



Take out the box in the middle with the power adapter inside. (brown box)

Take out the power cord.



Remove the circular Styrofoam part from the middle.

**MAKE SURE IT IS
THE RIGHT POWER
CORD FOR YOUR
COUNTRY!**

REMOVE THE PROTECTIVE
FOAM SHEET/BAG.

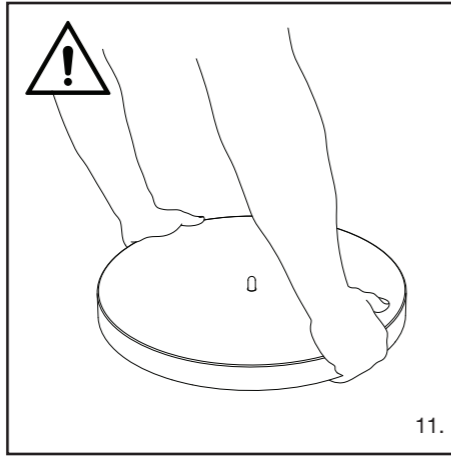


WARNING



LEAVE THE PLATTER INSIDE THE TOP PART OF THE STYROFOAM BOX, UNTIL YOU HAVE SET UP THE TURNTABLE AND YOU ONLY HAVE LEFT TO PLACE THE PLATTER ON THE TURNTABLE FEET (PAGE 18).

10.



11.

When taking out or handling the platter, grip with both hands and always keep it away from any metal or magnetic object, cellphones, tvs or any other electronic equipment. (minimum 50cm or 20" distance)



WARNING



BEFORE SETTING UP THE PLATTER ON RAISED PLATTER FEET READ PAGE 18.

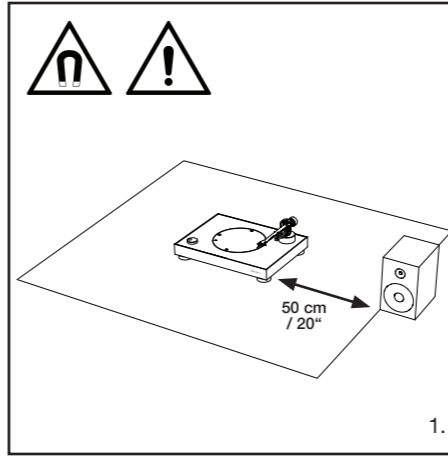
After purchase, we suggest that you save all packaging materials for possible future storage, moving, or shipping. Warranty and returns are valid if sent back in the original packaging and packed properly. Follow the instructions in case of repacking (page 39).

12.

8. SETTING UP THE TURNTABLE



THIS PRODUCT REQUIRES SOME ASSEMBLY BEFORE USING IT FOR THE FIRST TIME. DO NOT CONNECT THE POWER CABLE UNTIL ASSEMBLY IS COMPLETE.



1.

Place the turntable body (2) on the pre-prepared surface.



MAKE SURE THE OUTLET YOU WISH TO PLUG THE APPARATUS IN, IS IN GOOD CONDITION.

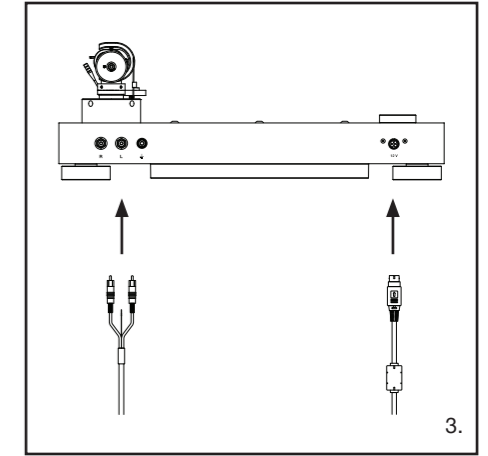


Before connecting the power adapter, make sure the power adapter is suitable for the voltage in your country.

Plug in the power cord directly to the outlet.

Do not use extensions or dividers.

2.



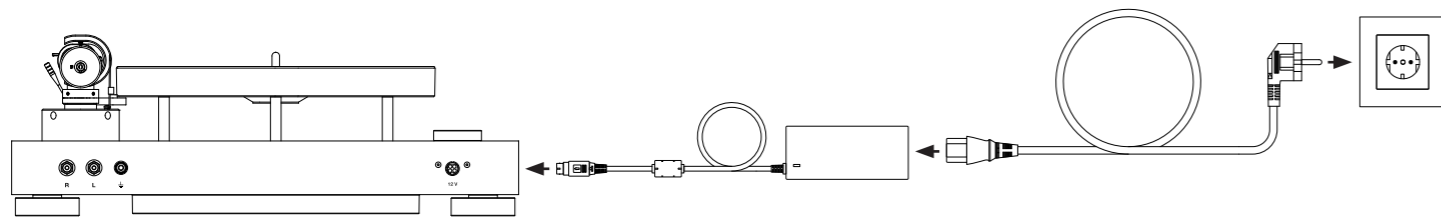
3.


Follow the instructions on the next page to connect the turntable properly.

Schematic visualisation on page 16.



IT IS EXTREMELY IMPORTANT TO FOLLOW THE STEPS ON HOW TO CONNECT THE TURNTABLE. IF THE STEPS ARE NOT FOLLOWED, IT CAN CAUSE DAMAGE TO THE TURNTABLE.



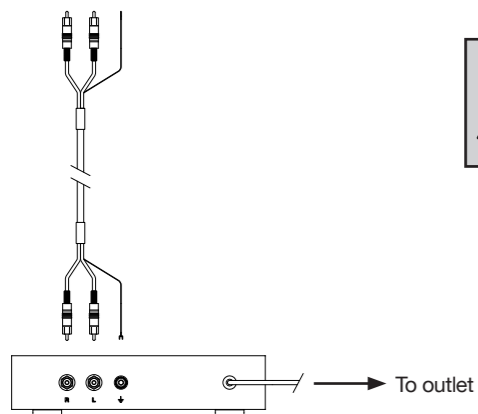
1. step  Plug the power cable into the DC inlet.

2. step Connect the power adapter and power cord.

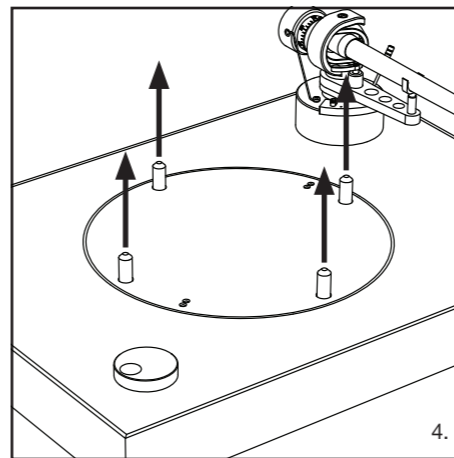
3. step Plug the power plug into the outlet.

Power adapter with power cord
 AC input: AC100-240 V / 50-60 Hz / 2.0 A
 DC output: 12V / 0.5 A
 Operating temperature at normal playing condition (room temp. 25°C) is approximately 35°C.

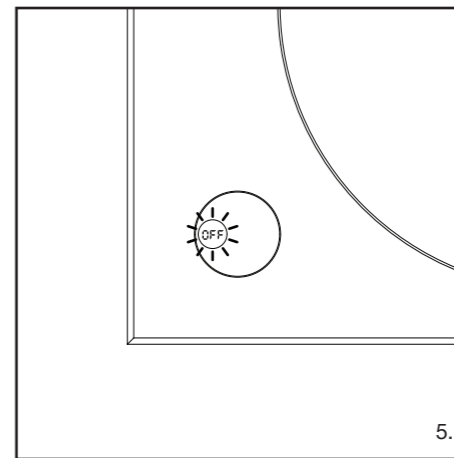
BE SURE TO LEAVE THE APPARATUS PLUGGED IN FOR A MINIMUM OF 60 MINUTES BEFORE FIRST USE, FOR THE APPARATUS TO WORK AS INTENDED.



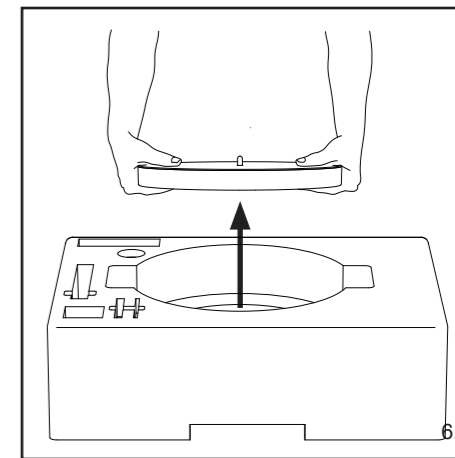
Connectable equipment
(Amplifier, etc.)



When the turntable is plugged into the electric power grid for the first time, the platter feet will rise out of the turntable body into set up position.



When the light in the control button stops blinking, the turntable body set up is finished.



Lift the levitating platter vertically out of the upper half of the Styrofoam box.

REMOVE THE CIRCULAR STYROFOAM PART FROM THE UPPER HALF OF THE STYROFOAM BOX.

REMOVE THE PLASTIC BAG FROM THE LEVITATING PLATTER.



WARNING

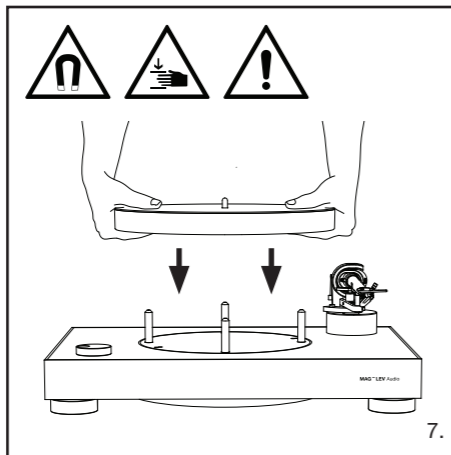
HAVE A STRONG GRIP ON THE PLATTER, DUE TO THE STRONG FORCE AND PULL OF THE MAGNETS IN THE TURNTABLE BODY AND THE LEVITATING PLATTER.



WARNING

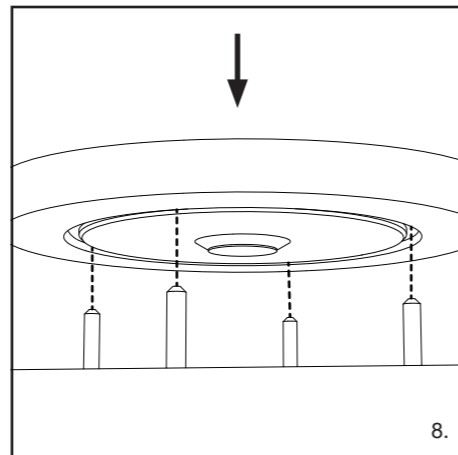


BE CAREFUL EXECUTING THIS STEP. THERE IS RISK OF BODILY INJURY.

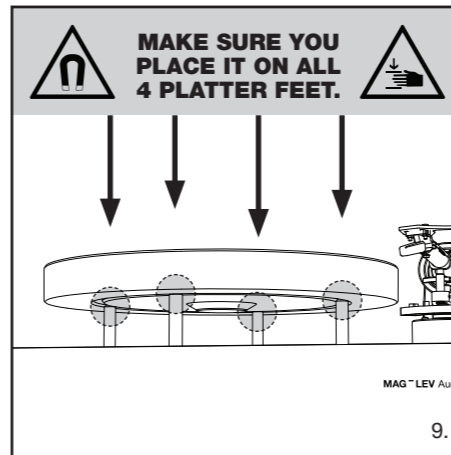


Hold the levitating platter with both hands and grip firmly.

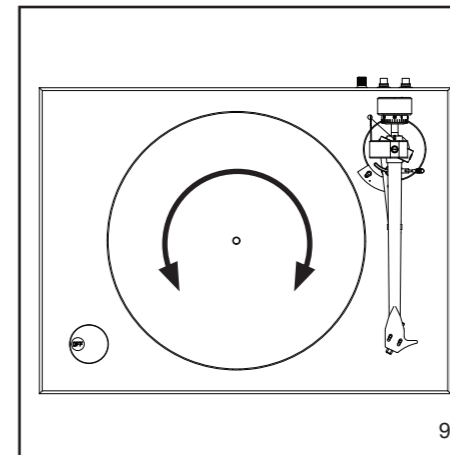
Firmly gripping the platter, start lowering the platter on the platter feet, slowly and vertically.



Place the channel on the bottom of the platter onto all four platter feet, carefully and patiently.



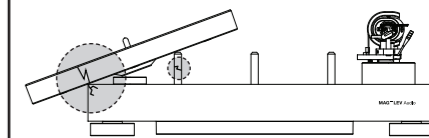
Make sure that the platter feet are fully in the channel and you feel no force of the magnets, then let go of the platter.



You can help make sure all 4 feet are in the channel by rotating the platter around its axis. If all 4 platter feet are not in the channel, you won't be able to turn the platter with ease and you will feel a force of the magnets pulling the platter toward the body.



WARNING



WARNING

If the platter is not properly set up, the platter will fall down due to strong magnets! In this case there is risk of bodily injuries and damages to the turntable.